

# COVID-19 in Lake County, Ohio: October 14, 2020

This report summarizes available data for total COVID-19 cases in Lake County, Ohio, including both laboratory confirmed and probable cases, based on cumulative data entered in the Ohio Disease Reporting System as of 2:00 pm the day prior to issue. The level of detail provided has been determined appropriate, given the number of cases in Lake County, to ensure the protection of sensitive individual health information. All data are preliminary and subject to change.

**Total Cases: 1,770**

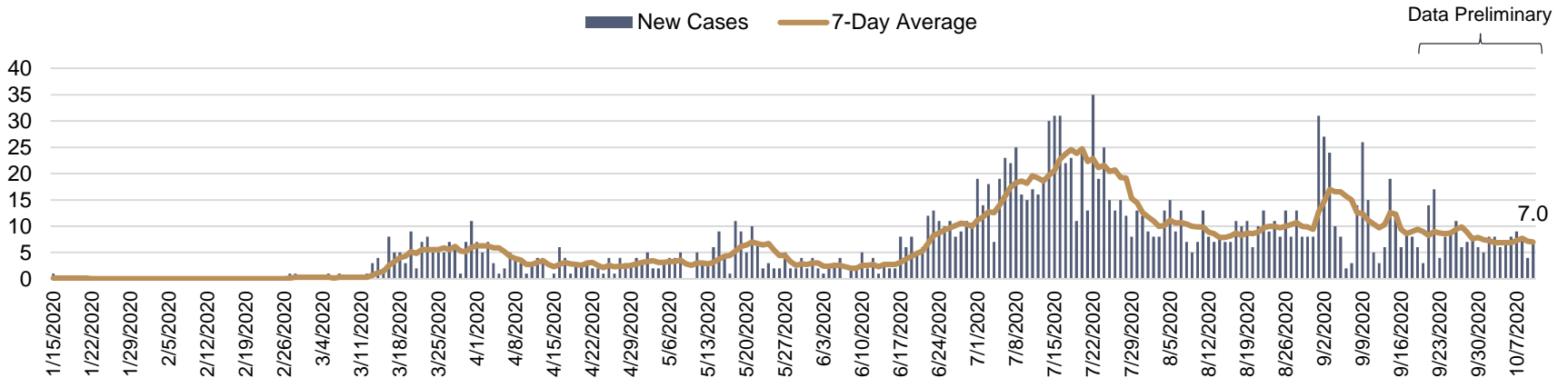
**Lab Confirmed Cases: 1,707**

**Probable Cases: 63**

Antibody Positive: 16

Non-Antibody: 47

New COVID-19 Cases by Event Date\*



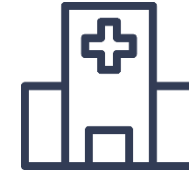
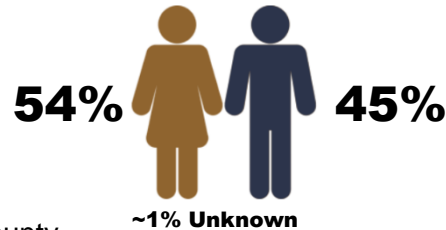
\*Event Date refers to the first date in a medical record associated with a given illness. For the vast majority of cases, the reported Event Date refers to the date of symptom onset (date on which the case first experienced COVID-19 symptoms). For the cases for which this date is unknown, the date presented refers to the date a specimen was collected for COVID-19 testing. Due to lags in testing and reporting, new cases may appear for dates several weeks in the past. A seven (7) day rolling average is included to assist in visualizing the trend, and the most recent value is indicated on the far right side of the graph.



## Cumulative Total COVID-19 Cases (N=1,770)

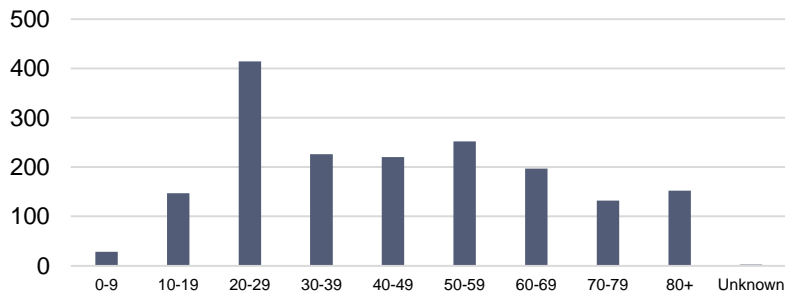


**Ages:**  
**<1 to 103**  
**Average:**  
**45 Years**

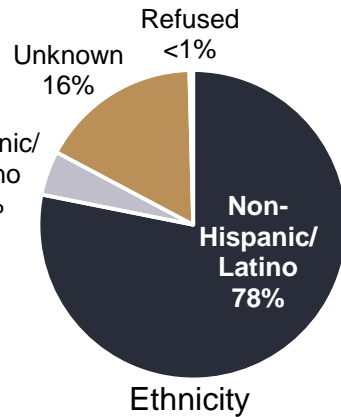
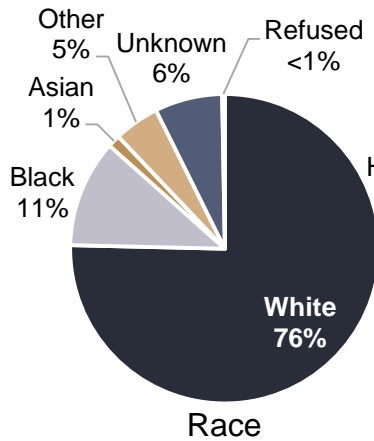
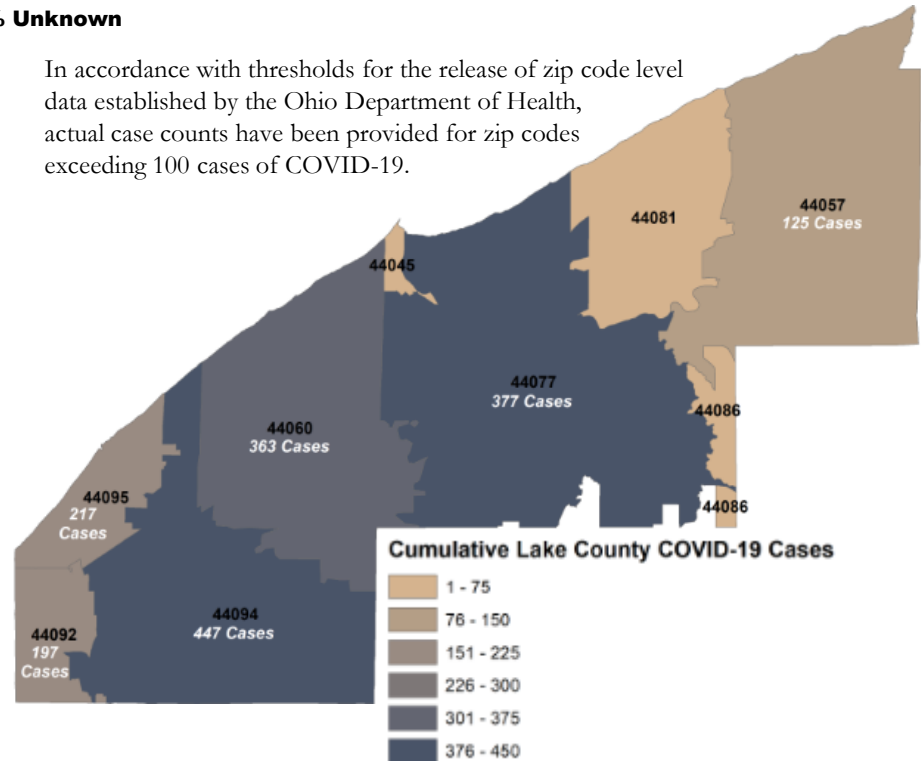


**16%**  
**Healthcare Workers**

Ages of COVID-19 Cases in Lake County



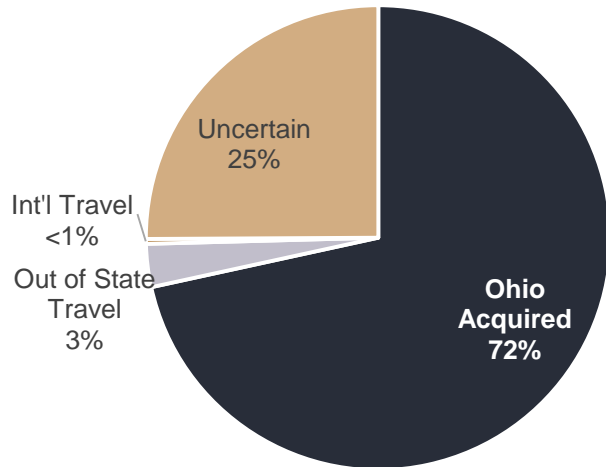
In accordance with thresholds for the release of zip code level data established by the Ohio Department of Health, actual case counts have been provided for zip codes exceeding 100 cases of COVID-19.



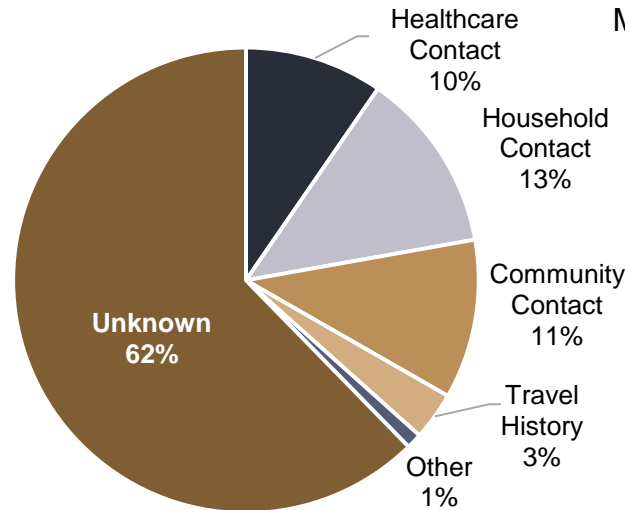
## Cumulative Total COVID-19 Cases (N=1,770)

### States of Exposure:

- |            |                |
|------------|----------------|
| Arizona    | Mississippi    |
| California | North Carolina |
| Colorado   | New Jersey     |
| Florida    | Nevada         |
| Georgia    | New York       |
| Indiana    | Pennsylvania   |
| Maryland   | South Carolina |
| Michigan   | Tennessee      |
| Minnesota  | Texas          |



**Exposure Geography**

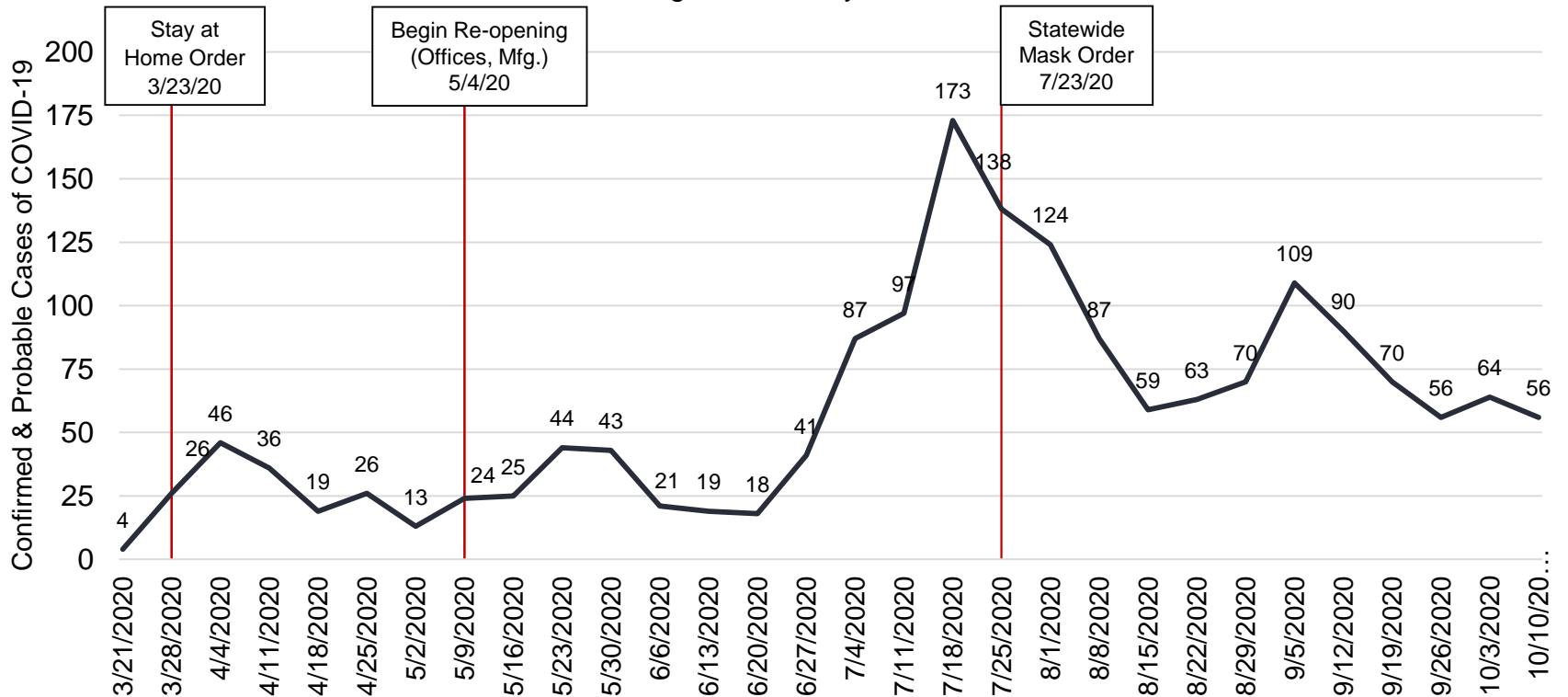


**Exposure Source**



The following graph depicts the number of new cases among Lake County residents by week, classified by the date reported to LCGHD and thus added to the cumulative count (positive test or diagnosis according to CDC case definitions). For the purpose of this report, weeks run from Sunday through Saturday. Data reported for each week reflects the number of cases reported from the previous Sunday, ending on the Saturday date shown. The date reported is used because new cases are regularly reported with symptom onset dates several weeks or more in the past due to lags in testing, reporting, and case investigation. Dates for the Stay at Home Order, state reopening, and mask order are added for reference.

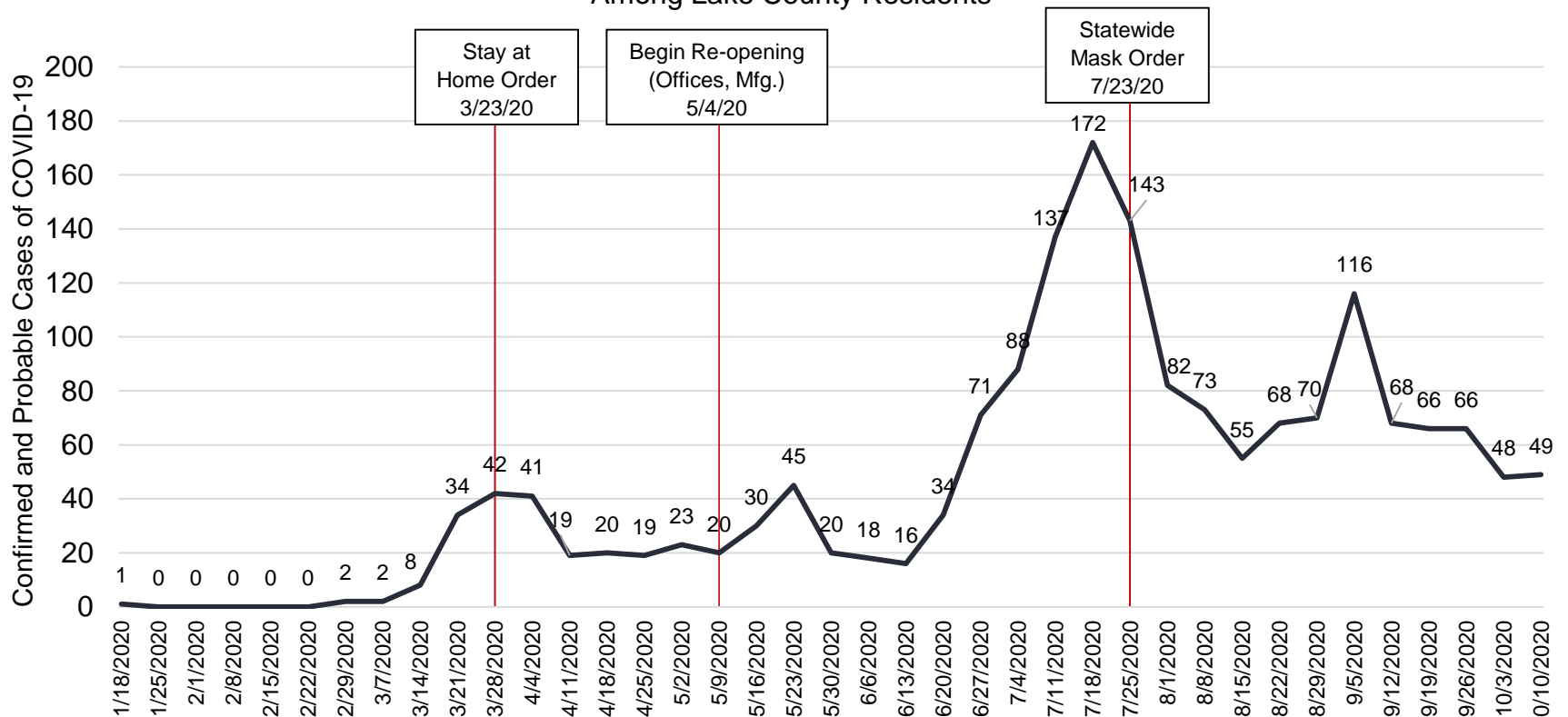
New Cases of COVID-19 Reported by Week  
Among Lake County Residents



The following graph depicts the number of new cases among Lake County residents by week, classified by the event date, which is the first known date associated with a case. For most cases, this is the date of symptom onset (date on which the confirmed or probable case first experienced symptoms), but may reflect the date of test specimen collection in cases where onset date is unknown due to a case being asymptomatic or delays in the verification of the onset date during case investigation. For the purpose of this report, weeks run from Sunday through Saturday. Data reported for each week reflects the number of cases from the previous Sunday ending on the Saturday date shown. Dates for the Stay at Home, reopening, and mask orders are added for reference.

New Cases of COVID-19 by Week, Classified by Case Event Date  
Among Lake County Residents

Data Preliminary



## COVID-19 Hospitalizations (Cumulative)



**182**  
Cases  
Hospitalized  
(10% of cases)



Length of Stay:  
**1 to 38 days**  
Average:  
**7.8 Days**



**42**  
ICU  
Admissions

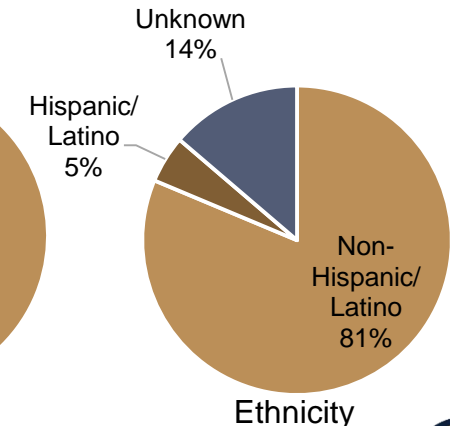
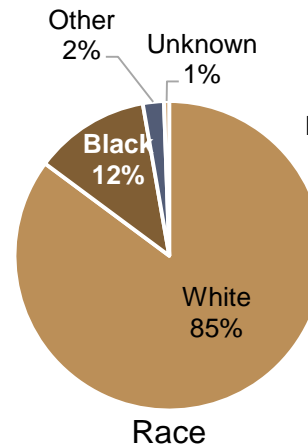
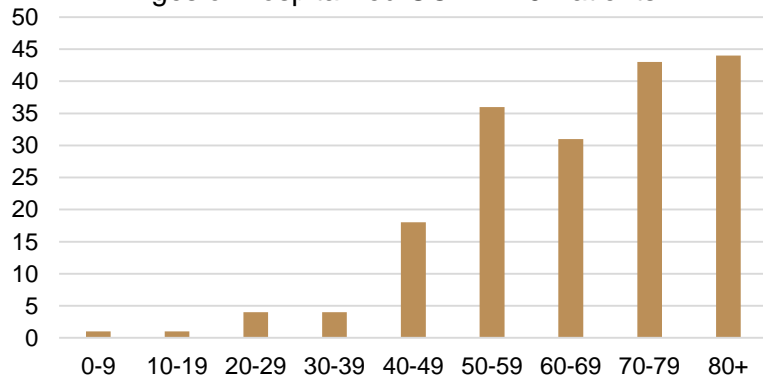


Ages:  
**<1 to 98**  
Average:  
**66 Years**



**81%**  
Pre-existing  
Condition(s)

Ages of Hospitalized COVID-19 Patients



## COVID-19 Deaths (Cumulative)

**COVID-19  
Deaths**  
**57**



**Ages:**  
**43 to 98**  
**Average:**  
**83 Years**

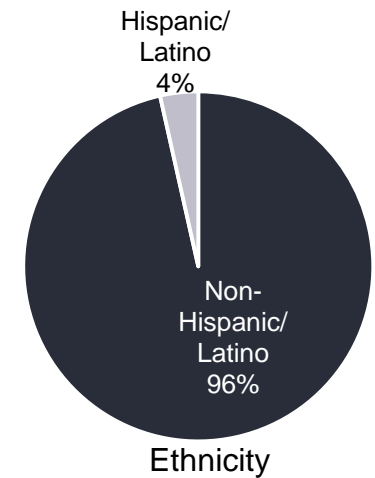
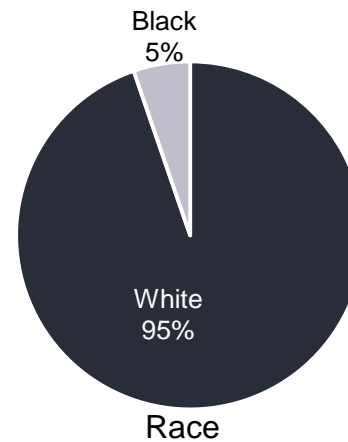
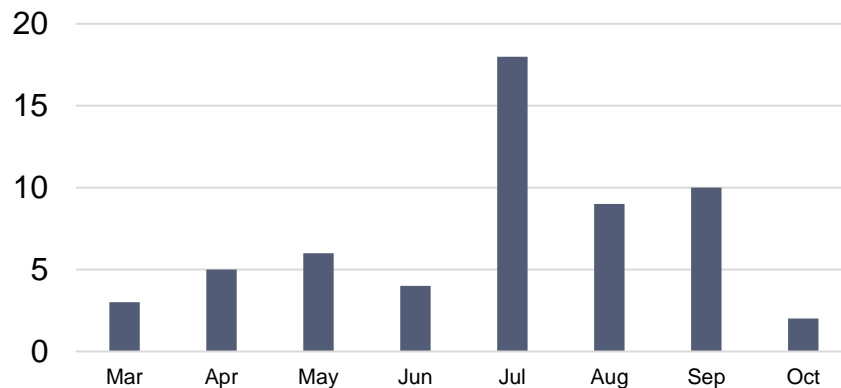


**89%**  
**Known  
Pre-existing  
Condition(s)**



**63%**  
**Resided in  
Congregate  
Living**

COVID-19 Deaths by Month



**At a Glance**

Since Last Data Report Release*			
Metric	10/6	10/13	Change
Total Reported Cases (Cumulative)	1,711	1,770	+59
Total Reported Hospitalizations (Cumulative)	180	182	+2
Total Reported ICU Admissions (Cumulative)	42	42	----
Total Reported Deaths (Cumulative)	56	57	+1
Average Age of Cumulative Cases	45	45	----
Average Age of Fatal Cases	82	83	+1

October to Date ( <i>Data is preliminary and subject to change as newly reported cases are investigated</i> )	
Cases with Verified Symptom Onset Date in October**	42
Hospitalizations with Known Admission Date in October	2
ICU Admissions with Known Hospital Admission Date in October	0
COVID-19 Deaths Occurring in October	2

\*Note this refers to cumulative total reported in each Wednesday Report.

\*\*Note this number lags until onset date is able to be verified by case interview. "Onset Date" in ODH CSV file actually refers to "Event Date," which is filled with date a test specimen was collected until onset date is verified by case.



**Lake County  
General Health District**

**Public Health**  
Prevent. Promote. Protect.



REV: 10/13/2020