

COVID-19 in Lake County, Ohio: July 22, 2020

This report summarizes available data for total COVID-19 cases in Lake County, Ohio, including both laboratory confirmed and probable cases, based on cumulative data entered in the Ohio Disease Reporting System as of 2:00 pm the day prior to issue. The level of detail provided has been determined appropriate, given the number of cases in Lake County, to ensure the protection of sensitive individual health information. All data is preliminary and subject to change.

Total Cases: 823

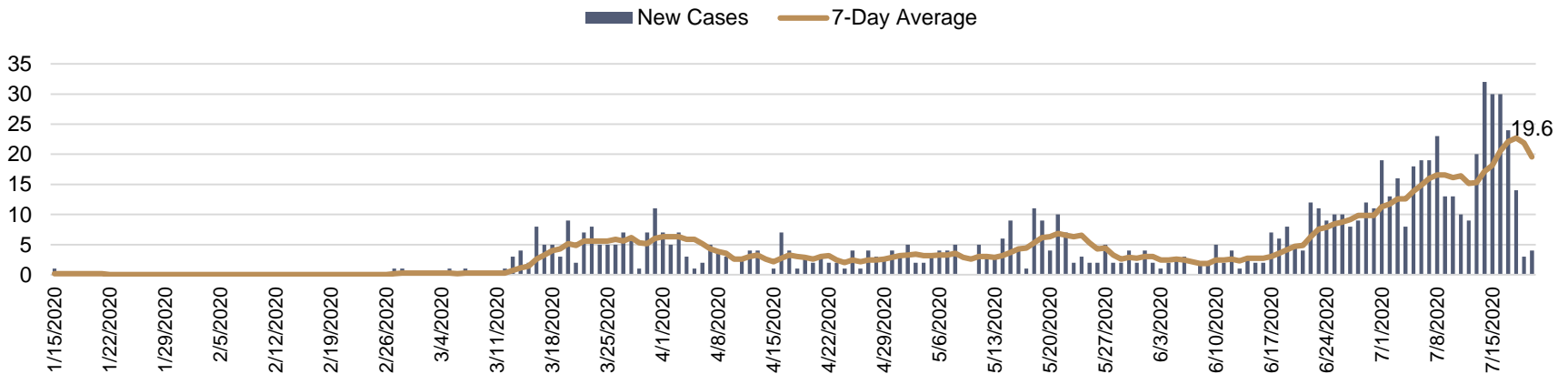
Lab Confirmed Cases: 779

Probable Cases: 44

Antibody Positive: 13

Non-Antibody: 31

New COVID-19 Cases by Event Date*



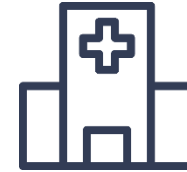
*Event Date refers to the first date in a medical record associated with a given illness. For the vast majority of cases, the reported Event Date refers to the date of symptom onset (date on which the case first experienced COVID-19 symptoms). For the cases for which this date is unknown, the date presented refers to the date a specimen was collected for COVID-19 testing. Due to lags in testing and reporting, new cases may appear for dates several weeks in the past. A seven (7) day rolling average is included to assist in visualizing the trend, and the most recent value is indicated on the far right side of the graph.



Cumulative Total COVID-19 Cases (N=823)

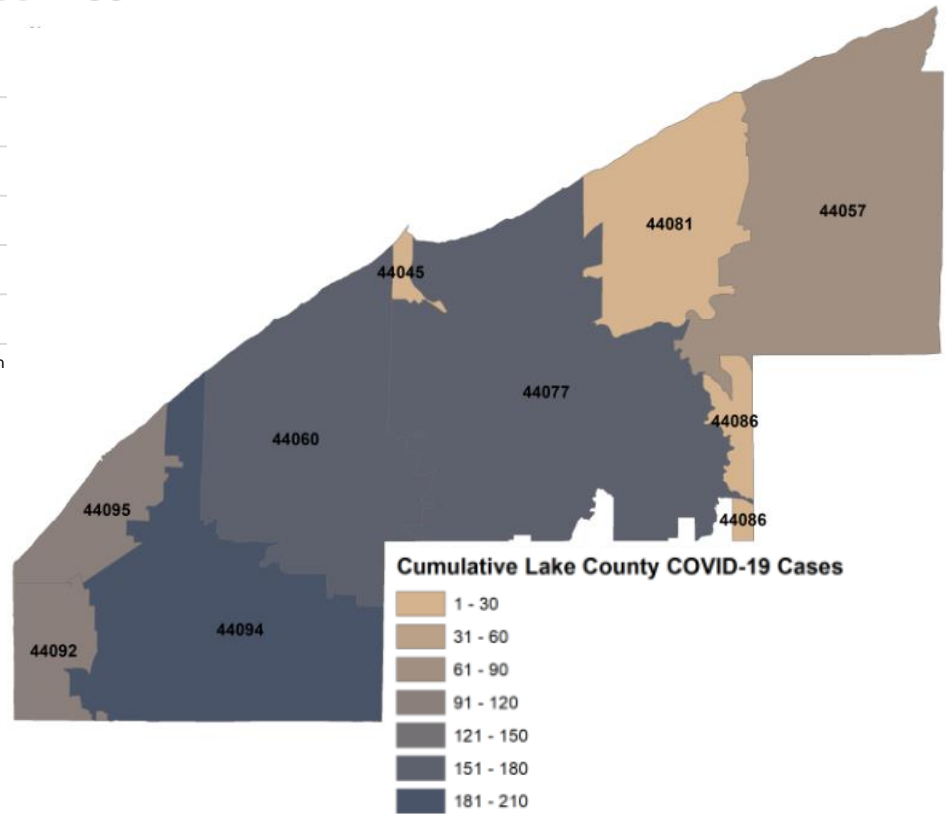
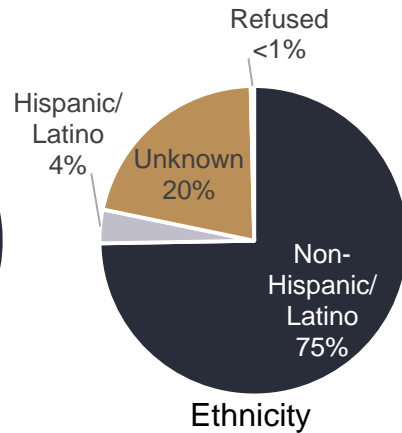
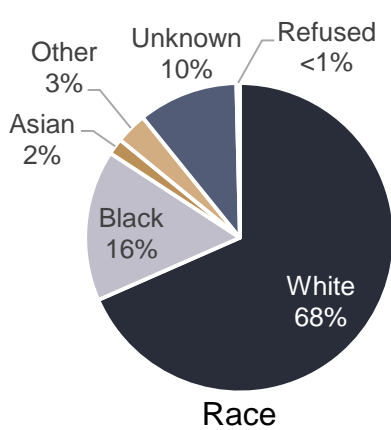
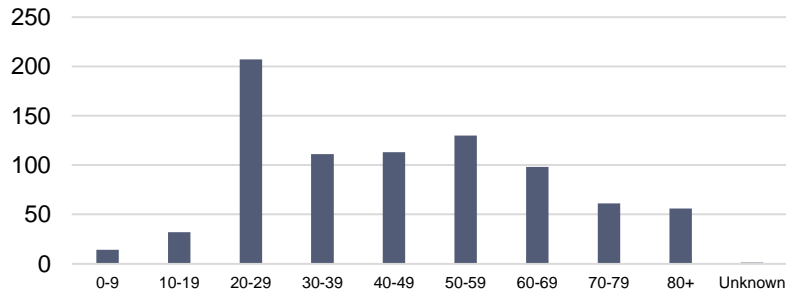


Ages:
<1 to 100
Average:
45 Years



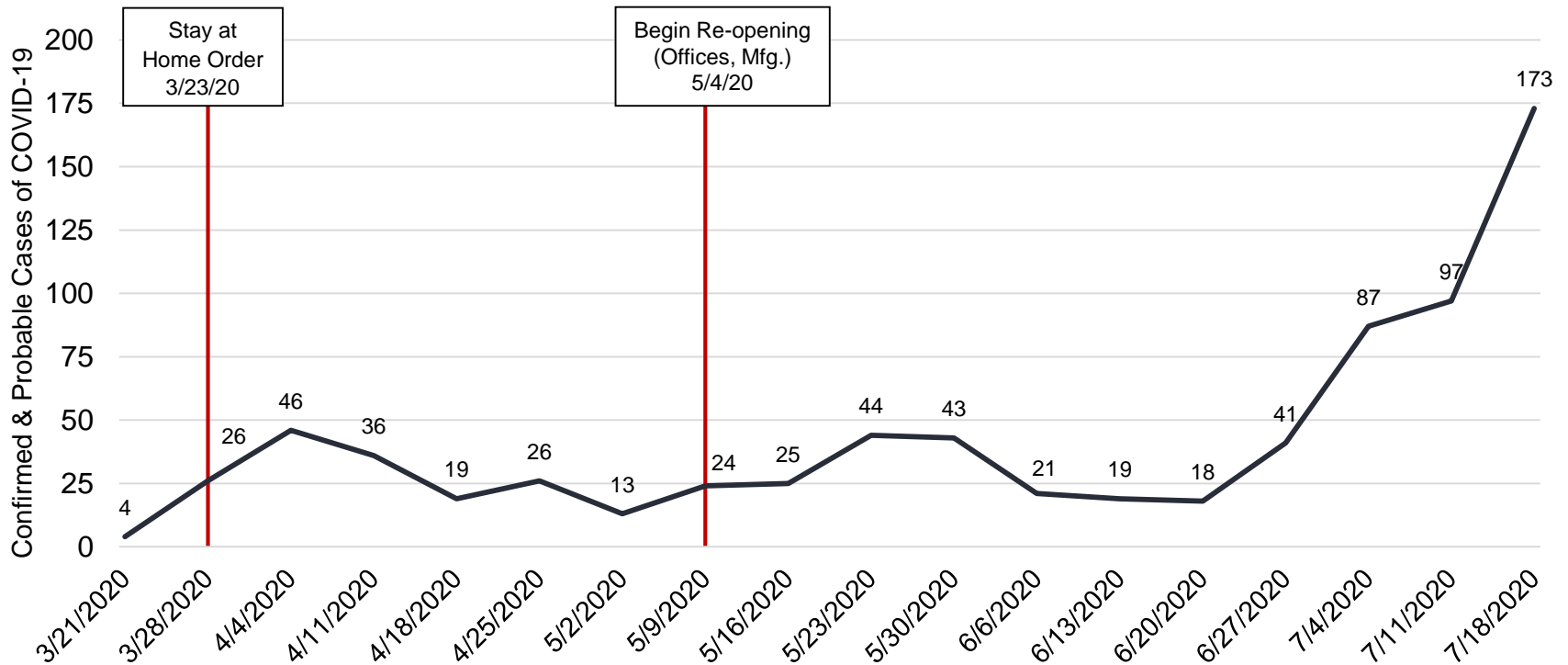
19%
Healthcare Workers

Ages of COVID-19 Cases in Lake County



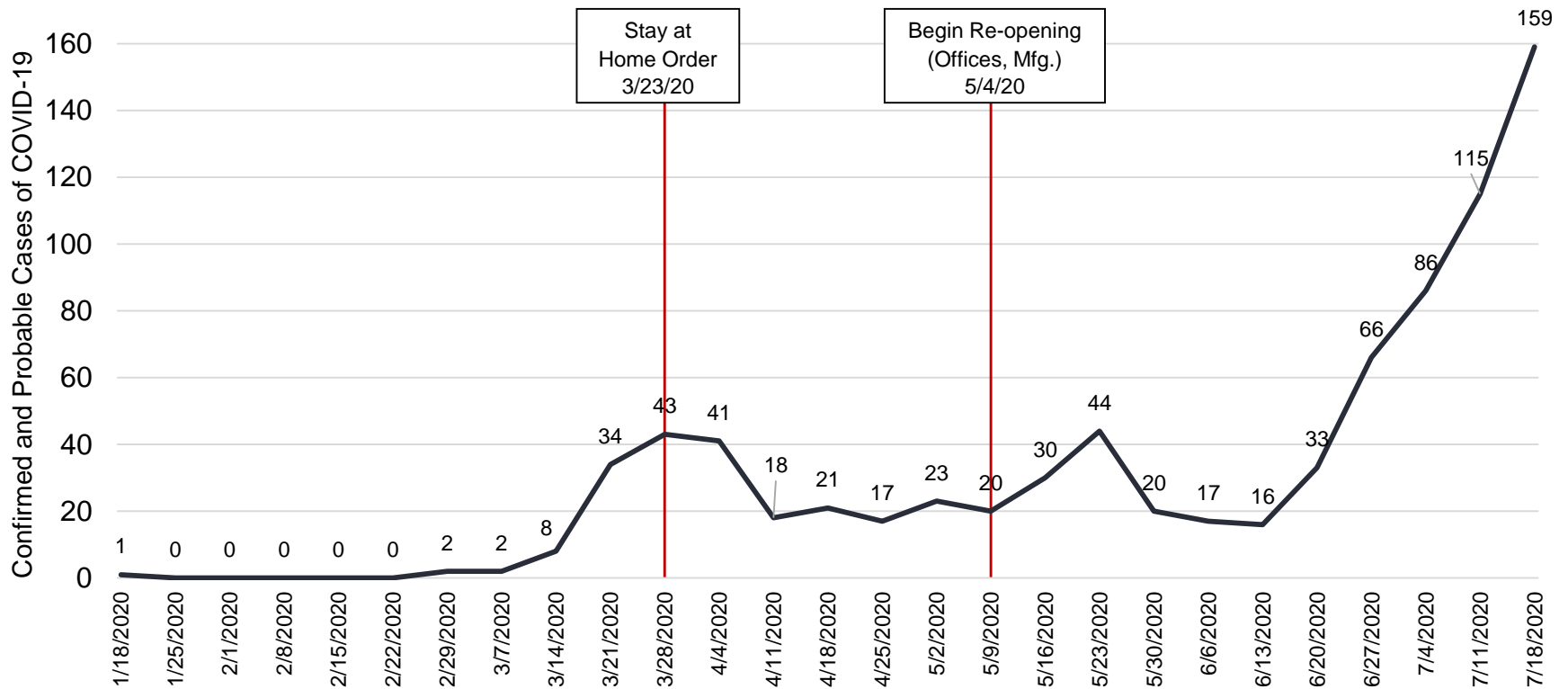
The following graph depicts the number of new cases among Lake County residents by week, classified by the date reported to LCGHD and thus added to the cumulative count (positive test or diagnosis according to CDC case definitions). For the purpose of this report, weeks run from Sunday through Saturday. Data reported for each week reflects the number of cases reported from the previous Sunday ending on the Saturday date shown. New cases are regularly reported with symptom onset dates several weeks or more in the past due to lags in testing and reporting. Dates for the Stay at Home Order and state reopening have been added for reference.

New Cases of COVID-19 Reported by Week Among Lake County Residents



The following graph depicts the number of new cases among Lake County residents by week, classified by the event date, which is the first known date associated with a case. For most cases, this is the date of symptom onset (date on which the confirmed or probable case first experienced symptoms), but may reflect the date of test specimen collection in cases where onset date is unknown. For the purpose of this report, weeks run from Sunday through Saturday. Data reported for each week reflects the number of cases from the previous Sunday ending on the Saturday date shown. Dates for the Stay at Home Order and reopening have been added for reference.

New Cases of COVID-19 by Week, Classified by Case Event Date
Among Lake County Residents



COVID-19 Hospitalizations (Cumulative)



104
Cases
Hospitalized
(13% of cases)



Length of Stay:
1 to 38 days
Average:
8.6 Days



31
ICU
Admissions

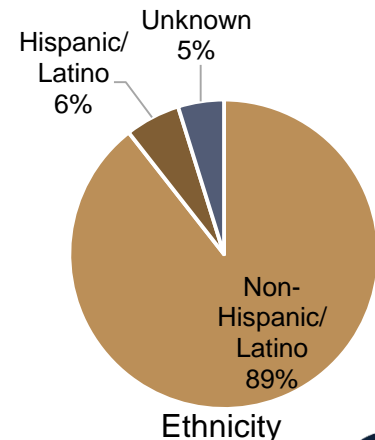
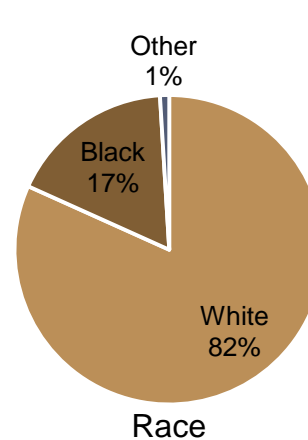
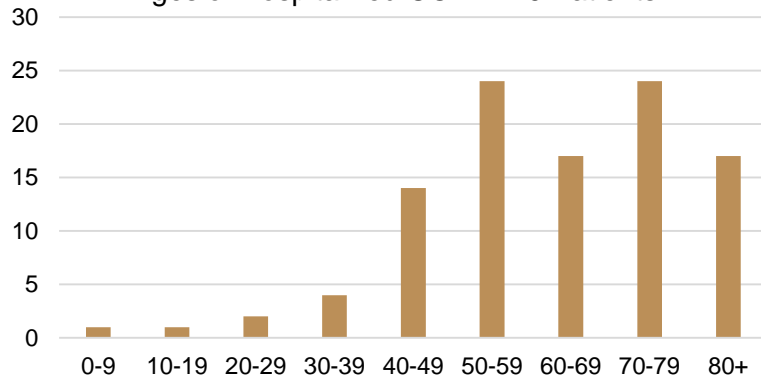


Ages:
<1 to 96
Average:
62 Years



87%
Pre-existing
Conditions

Ages of Hospitalized COVID-19 Patients



COVID-19 Deaths (Cumulative)

**COVID-19
Deaths
25**



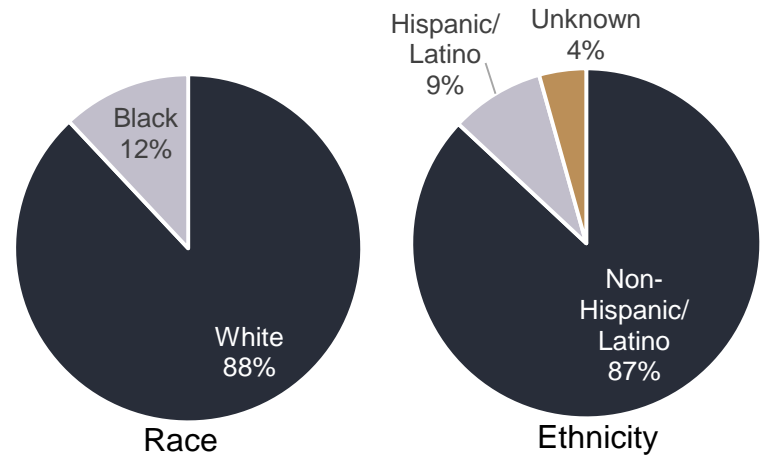
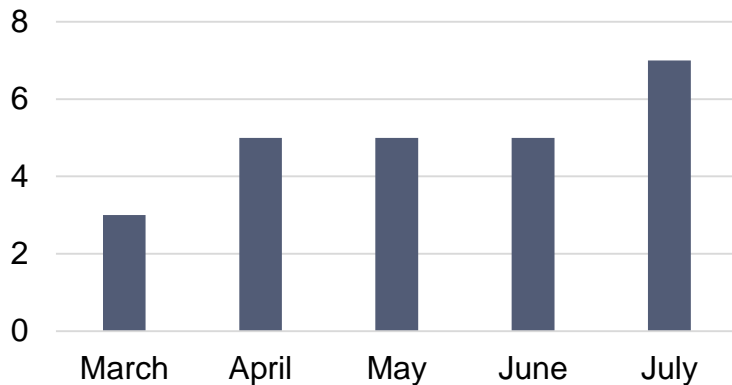
**Ages:
43 to 94
Average:
78 Years**



**84%
Known
Pre-existing
Conditions**

40%   **60%**

COVID-19 Deaths by Month



At a Glance

Since Last Data Report Release*			
Metric	7/14	7/21	Change
Total Reported Cases (Cumulative)	643	823	+180
Total Reported Hospitalizations (Cumulative)	96	104	+8
Total Reported ICU Admissions (Cumulative)	30	31	+1
Total Reported Deaths (Cumulative)	22	25	+3
Average Age of Cumulative Cases	45	45	0
Average Age of Fatal Cases	78	78	0

July to Date (<i>Data is Preliminary and Subject to Change as Newly Reported Cases are Investigated</i>)	
Cases with Currently Known Symptom Onset Date in July	120
Hospitalizations with Known Admission Date in July	16
ICU Admissions with Known Hospital Admission Date in July	2
Deaths Occurring in July	7

*Note this refers to cumulative total reported in each Wednesday Report



**Lake County
General Health District**

Public Health
Prevent. Promote. Protect.



REV: 7/21/2020