

COVID-19 in Lake County, Ohio: July 15, 2020

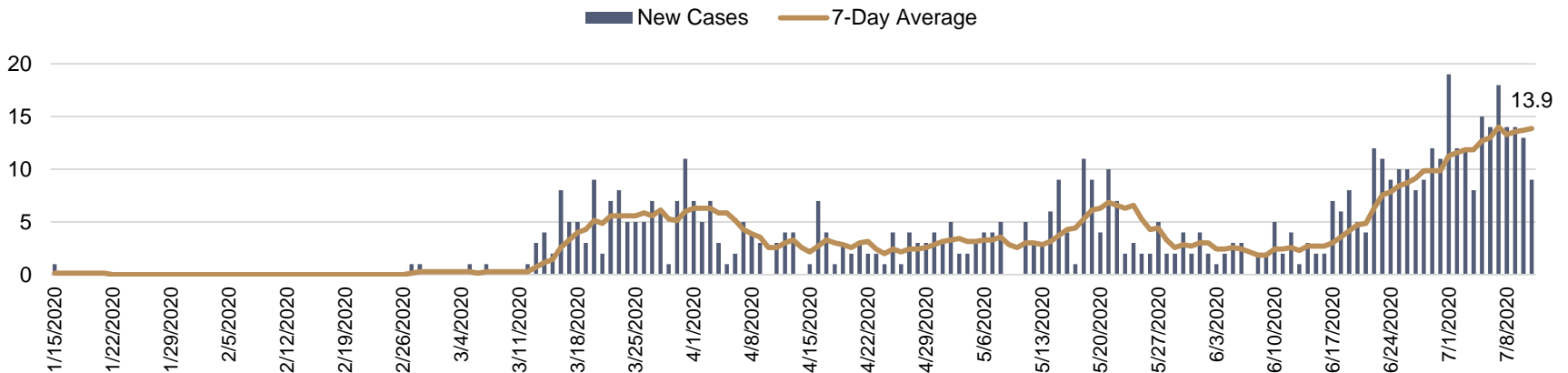
This report summarizes available data for total COVID-19 cases in Lake County, Ohio, including both laboratory confirmed and probable cases, based on cumulative data entered in the Ohio Disease Reporting System as of 2:00 pm the day prior to issue. The level of detail provided has been determined appropriate, given the number of cases in Lake County, to ensure the protection of sensitive individual health information. All data is preliminary and subject to change.

Confirmed Cases: 602

Probable Cases: 41

Total Cases: 643

New COVID-19 Cases by Event Date*



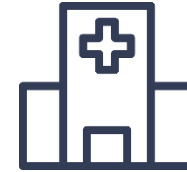
*Event Date refers to the first date in a medical record associated with a given illness. For the vast majority of cases, the reported Event Date refers to the date of symptom onset (date on which the case first experienced COVID-19 symptoms). For the cases for which this date is unknown, the date presented refers to the date a specimen was collected for COVID-19 testing. Due to lags in testing and reporting, new cases may appear for dates several weeks in the past. A seven (7) day rolling average is included to assist in visualizing the trend, and the most recent value is indicated on the far right side of the graph.



Cumulative Total COVID-19 Cases (N=643)

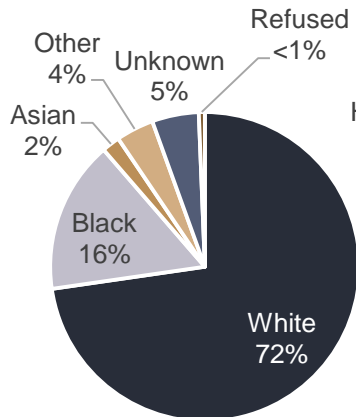
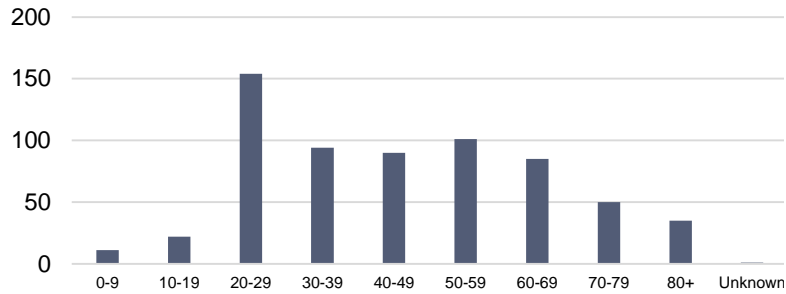


Ages:
<1 to 96
Average:
45 Years

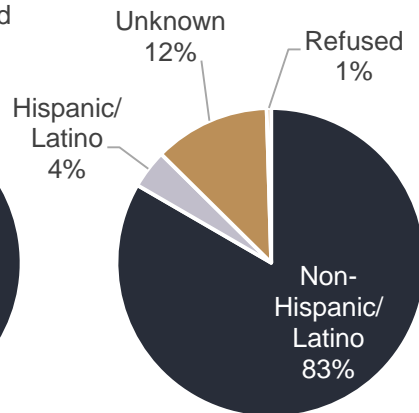


23%
Healthcare Workers

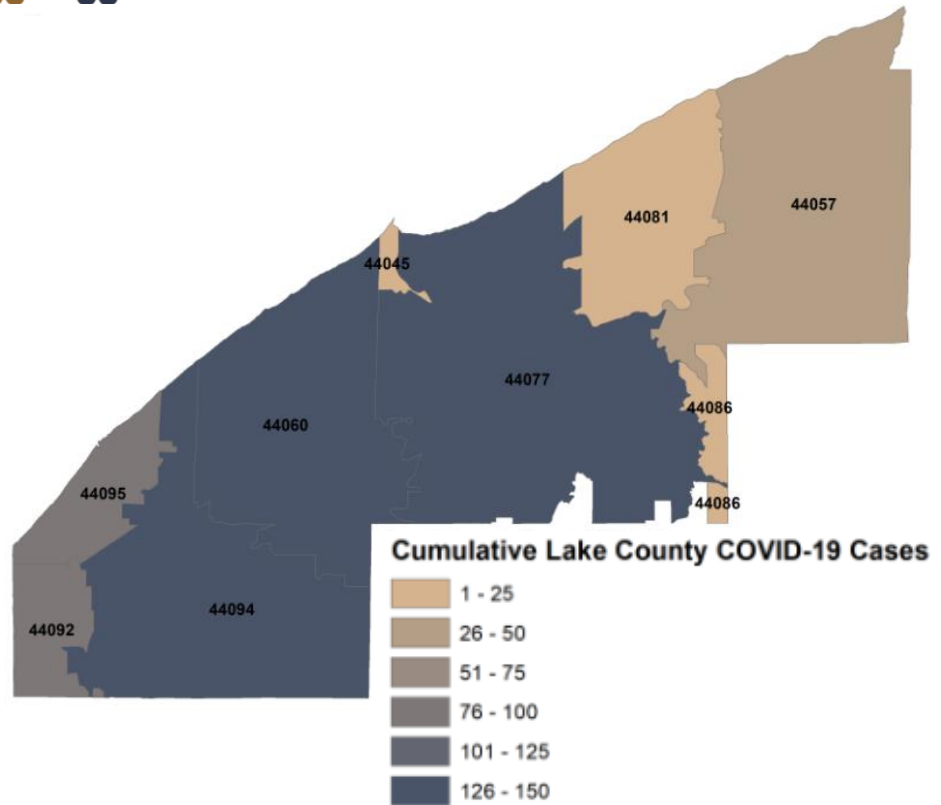
Ages of COVID-19 Cases in Lake County



Race

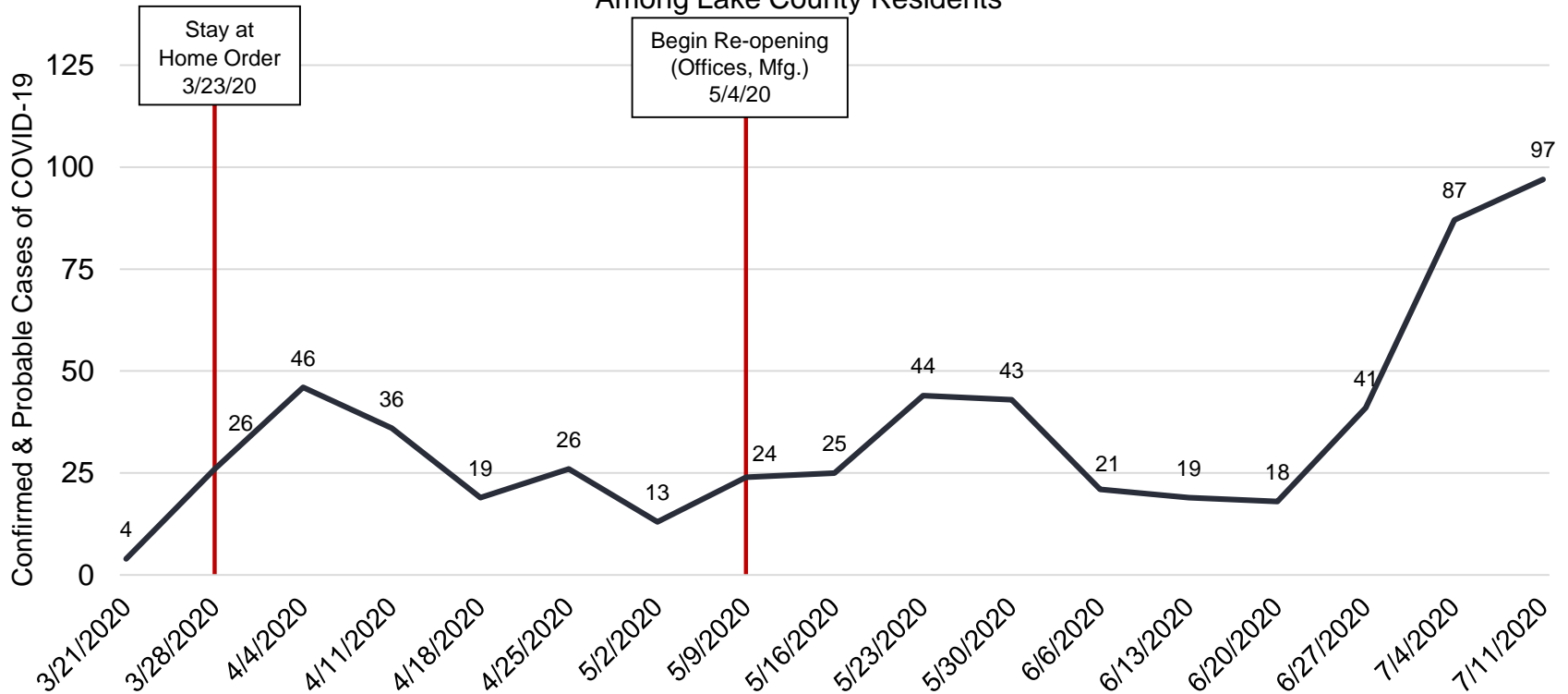


Ethnicity



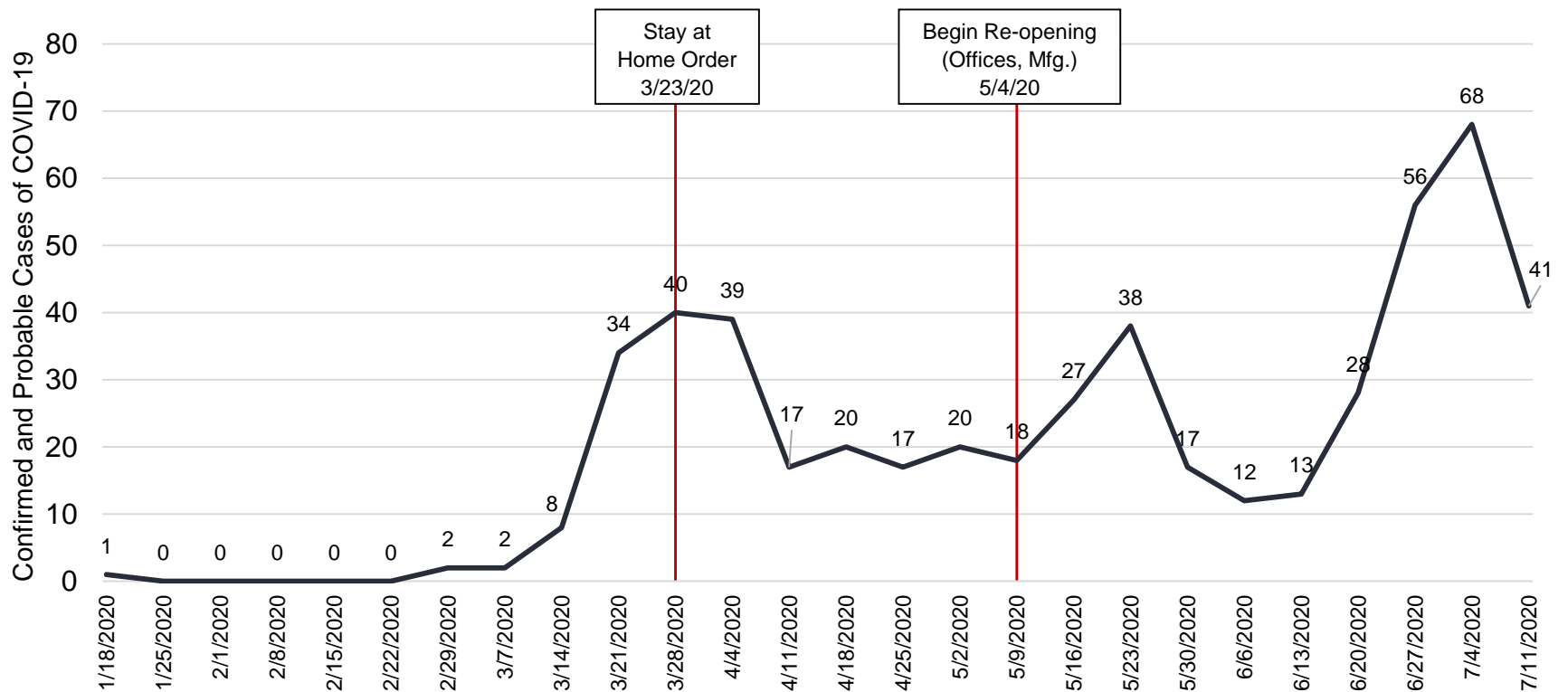
The following graph depicts the number of new cases among Lake County residents by week, classified by the date reported to LCGHD and thus added to the cumulative count (positive test or diagnosis according to CDC case definitions). For the purpose of this report, weeks run from Sunday through Saturday. Data reported for each week reflects the number of cases reported from the previous Sunday ending on the Saturday date shown. New cases are regularly reported with symptom onset dates several weeks or more in the past due to lags in testing and reporting. Dates for the Stay at Home Order and state reopening have been added for reference.

New Cases of COVID-19 Reported by Week Among Lake County Residents



The following graph depicts the number of new cases among Lake County residents by week, classified by the date of symptom onset (date on which the confirmed or probable case first experienced symptoms). For the purpose of this report, weeks run from Sunday through Saturday. Data reported for each week reflects the number of cases from the previous Sunday ending on the Saturday date shown. New cases are regularly reported with symptom onset dates several weeks or more in the past due to lags in testing and reporting, so numbers reported are subject to change. Dates for the Stay at Home Order and reopening have been added for reference.

New Cases of COVID-19 by Week of Symptom Onset*
Among Lake County Residents



*Excludes 125 cases for which the date of symptom onset is currently unknown.



COVID-19 Hospitalizations (Cumulative)



96
Cases
Hospitalized
(15% of cases)



Length of Stay:
1 to 38 days
Average:
8.6 Days



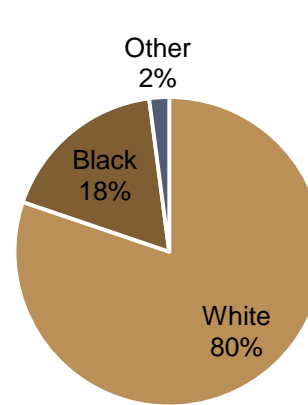
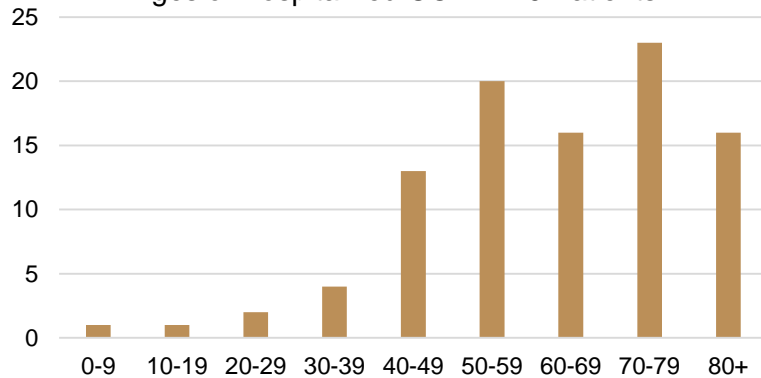
30
ICU
Admissions



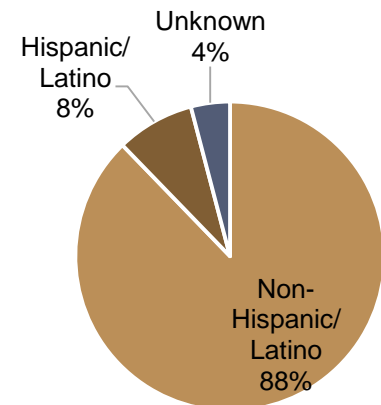
Ages:
<1 to 96
Average:
63 Years



Ages of Hospitalized COVID-19 Patients



Race



Ethnicity



COVID-19 Deaths (Cumulative)

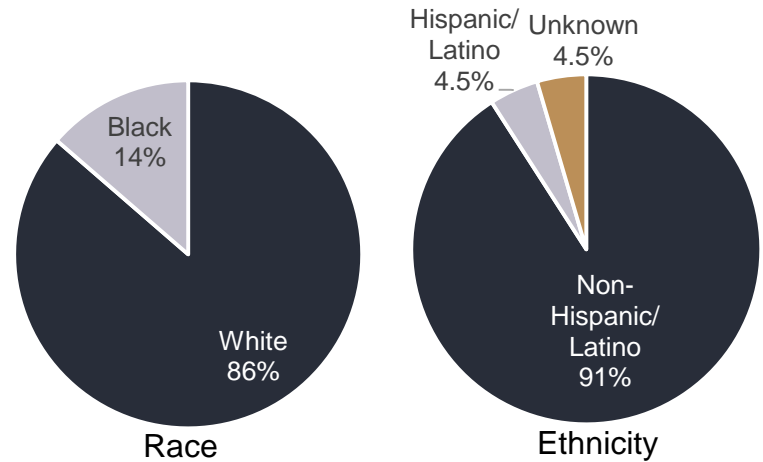
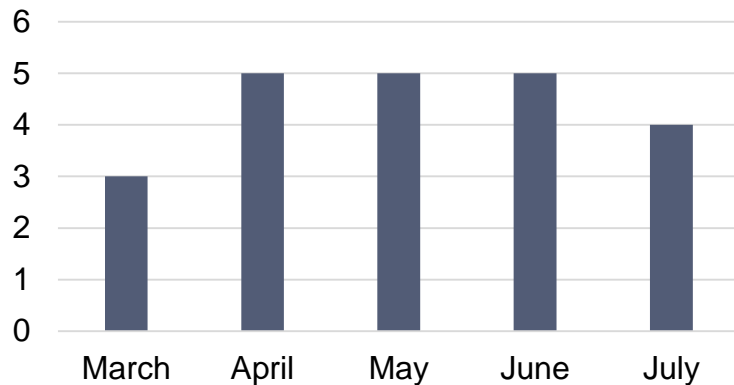


Ages:
43 to 94
Average:
78 Years

COVID-19
Deaths
22



COVID-19 Deaths by Month



At a Glance

Since Last Data Report Release*			
Metric	7/7	7/14	Change
Total Reported Cases (Cumulative)	507	643	+136
Total Reported Hospitalizations (Cumulative)	92	96	+4
Total Reported ICU Admissions (Cumulative)	30	30	0
Total Reported Deaths (Cumulative)	18	22	+4
Average Age of Cumulative Cases	47	45	-2 years
Average Age of Fatal Cases	77	78	+1 Year

July to Date (Data is preliminary and subject to change as newly reported cases are investigated)	
Cases with Currently Known Symptom Onset Date in July	80
Hospitalizations with Known Admission Date in July	7
ICU Admissions with Known Hospital Admission Date in July	1
Deaths Occurring in July	4

*Note this refers to cumulative total reported in each Wednesday Report



**Lake County
General Health District**

Public Health
Prevent. Promote. Protect.



REV: 7/20/2020