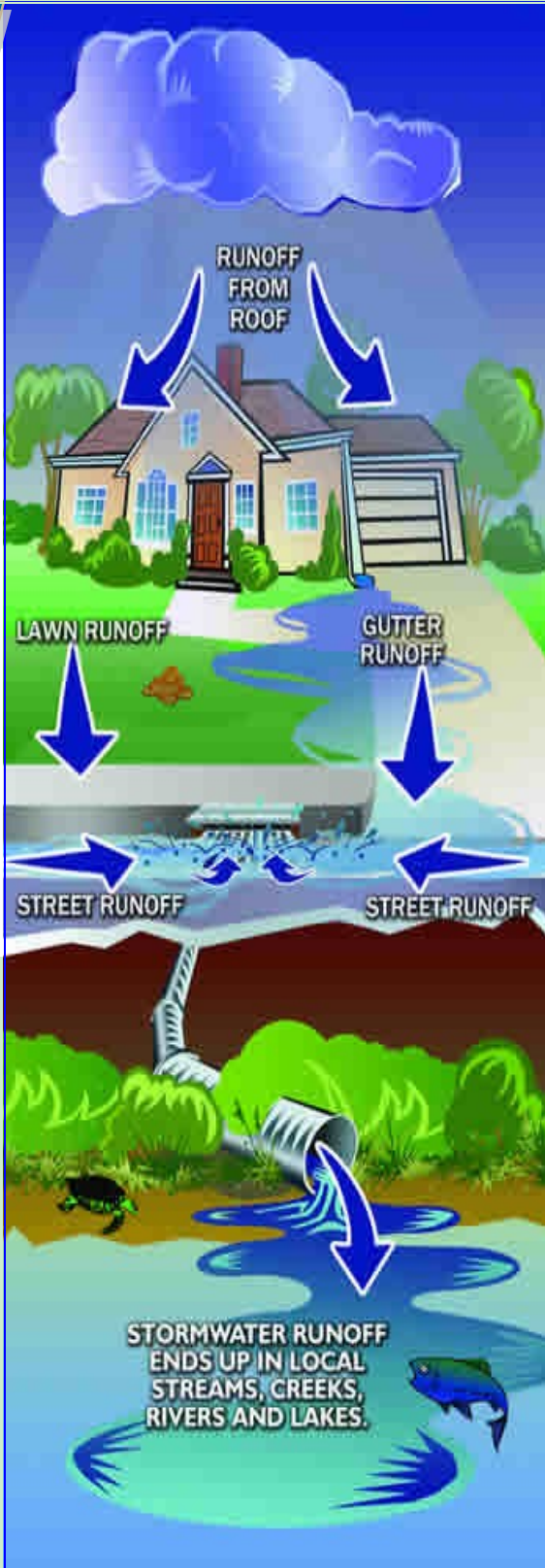


Lake County Stormwater Management Department

Our Mission: *"To protect the water resources of Lake County and to enhance the quality of life through effective stormwater management."*

What is Stormwater



Why Be Concerned with Stormwater?

Pollution from stormwater is one of the main threats to our lakes and rivers, therefore the U.S. Environmental Protection Agency (EPA) implemented a two-phased stormwater program to improve water quality. The Phase II program covers public stormwater systems in smaller, more urbanized areas. This program helps eliminate and reduce pollutants in stormwater entering the storm sewers and ditches in your neighborhood. The Lake County Stormwater Management Department (LCSMD) ensures compliance with the Phase II program for its member communities. The program, funded by a stormwater user fee, has partner agencies, including the Lake County General Health District and the Soil and Water Conservation District, to ensure compliance with all aspects of the permit and to improve water quality.

How is the Program Funded?

The Department is funded by a user fee program. The fees are charged to individual parcels of land based on the amount of hard surface on the property. The amount of hard surface is used because it is a good indicator of the amount of stormwater runoff that flows from the property.

Partner Organizations

LCSMD contracts with these organizations to provide stormwater services:

- Lake County General Health District
- Soil and Water Conservation District
- Chagrin River Watershed Partners

How Does Phase II Work in Our Communities?

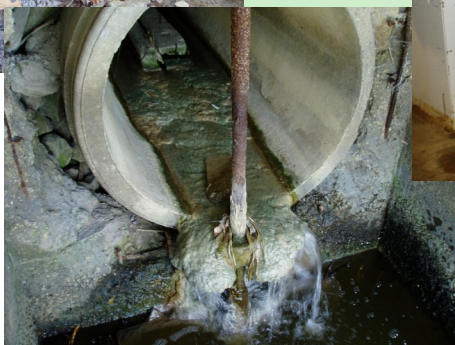
Public Education and Participation, through community events, newsletters, and other publications.



Construction site practices to prevent runoff and soil erosion



Identifying and Eliminating Illicit Discharges to stormwater.



Pollution Prevention and Good House-keeping at municipal facilities.



For more information contact:

Lake County Stormwater Management Department

(440) 350-5900

www.lakecountyohio.gov/smd